



MONTHLY MEMBERSHIP PROGRESS REPORT

District 2 E1

Results as of: 06/30/2019

GMT: OPEN

LOCATION TEXAS

GMT CA

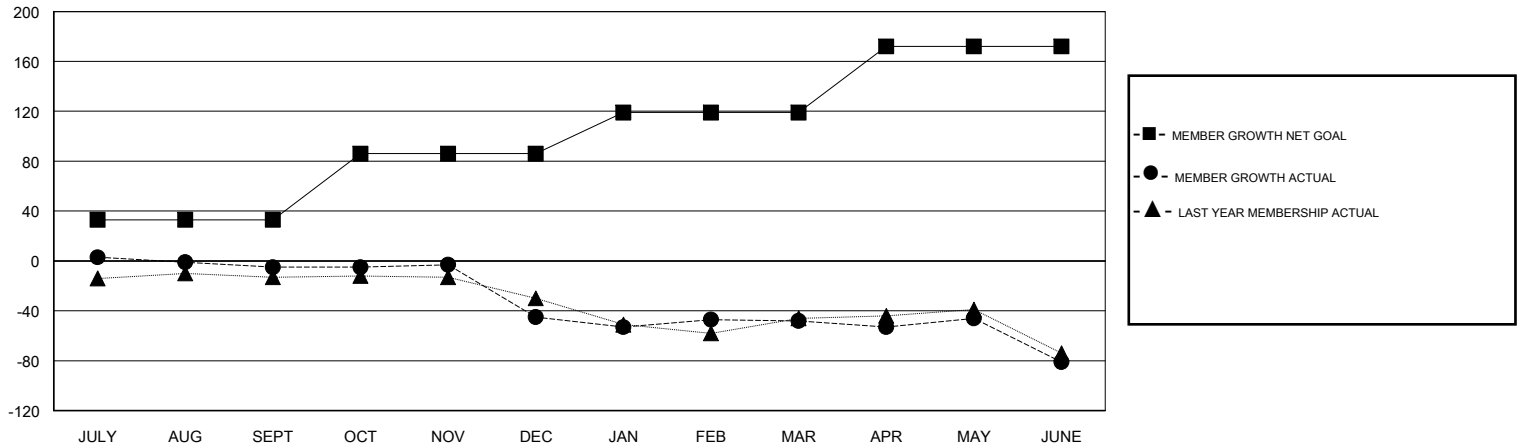
Clubs			
RESULTS FOR 2018-2019			
QUARTER	NEW CLUB GOAL	NEW CLUBS	DROPPED CLUBS
JULY/AUG/SEPT	0	0	0
OCT/NOV/DEC	1	0	3
JAN/FEB/MAR	0	0	1
APR/MAY/JUNE	1	0	1

Members			
RESULTS FOR 2018-2019			
QUARTER	MEMBER GROWTH NET GOAL	MEMBER GROWTH ACTUAL	DROPPED MEMBERS ACTUAL (including transfers)
JULY/AUG/SEPT	33	29	32
OCT/NOV/DEC	53	16	56
JAN/FEB/MAR	33	28	30
APR/MAY/JUNE	53	26	56

GOALS AND ACTUAL NEW CLUBS CUMULATIVE



GOALS AND ACTUAL MEMBERS CUMULATIVE



DROPPED CLUBS: 5	27 CLUBS OF 46 ADDED 1 OR MORE NEW MEMBERS	<u>GENDER DISTRIBUTION</u>	
DROPPED MEMBERS		MALE	724 (73.58%)
DECEASED	7	FEMALE	260 (26.42%)
CLUB CANCELLED	53	Women Percentage Fiscal Year Goal: 20%	
OTHER	114	CLICK HERE FOR CUMULATIVE MEMBERSHIP DATA	
TOTAL	174	TOTAL FAMILY UNIT MEMBERS	96
		FAMILY MEMBERS PAYING HALF DUES	48